



Duke Road, London, W4 2DF

Guide Price £1,750,000

WHITMAN & CO.

SALES · LETTINGS · COMMERCIAL

- Fully extended period family home
- Landscaped west facing private garden
- Sought after Glebe Estate location
- Fabulous kitchen/dining/family room
- Four beds/three baths
- No onward chain

Tenure - Freehold
Local Authority - Hounslow
Council Tax - Band F

THE PROPERTY

A beautifully presented period family home situated in the very popular 'Glebe Estate' within a couple of minutes walk of Chiswick High Road with its array of boutique shops, bars and restaurants. The property is considered to be larger than average for the surrounding area with the accommodation comprising a drawing room, fabulous fully extended kitchen/dining/family room, study/office/TV room, a primary bedroom suite with a luxurious en-suite bathroom with walk-in shower area, three further bedrooms, two further shower rooms, ground floor cloakroom, and a landscaped private west facing rear garden. The property is presented in immaculate condition throughout. Local transport links include both Turnham Green and Chiswick Park tube stations, numerous local bus routes and convenient vehicular access via the A4/M4 to Central London, Heathrow and The West. No onward chain.

Duke Road, W4

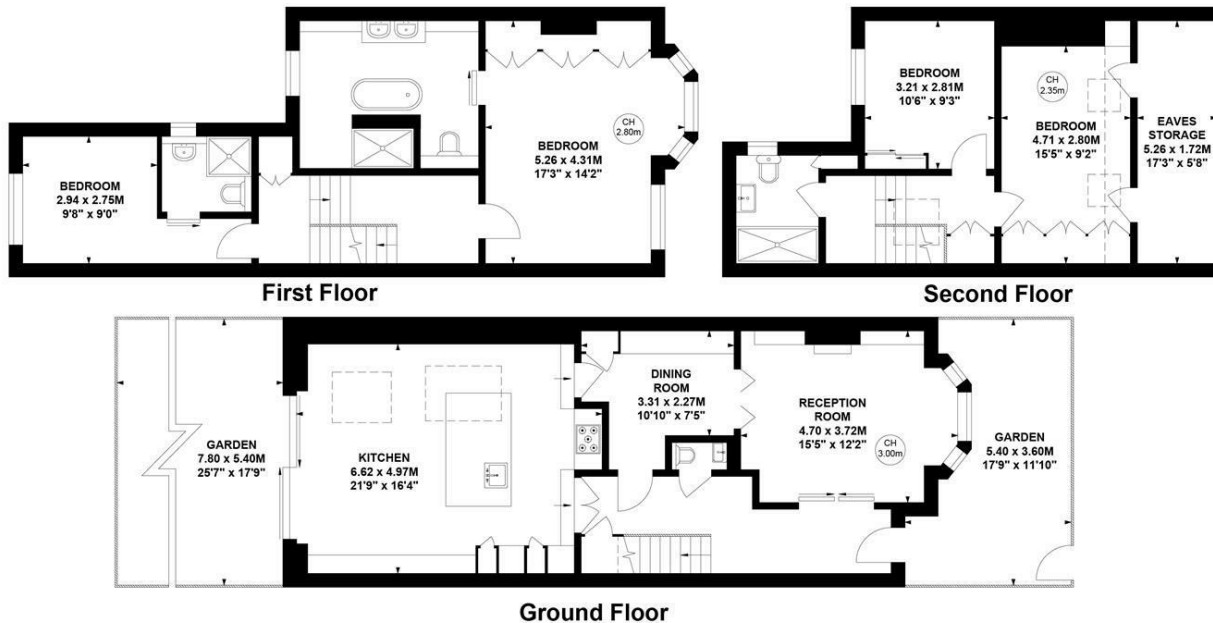
Approximate Gross Internal Area

174.25 sq m / 1876 sq ft
(Including Eaves Storage)

Eaves Storage
9.04 sq m / 97 sq ft



Key :
CH - Ceiling Height



Not to scale, for guidance only and must not be relied upon as a statement of fact.
All measurements and areas are approximate only

SITUATION



5-7 Turnham Green Terrace, Chiswick, London, W4 1RG

Tel 020 8747 8800

E-mail sales@whitmanandco.com

Website www.whitmanandco.com